

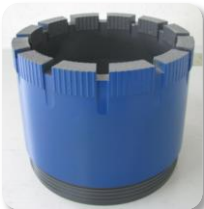


# Impregnated Diamond Bit

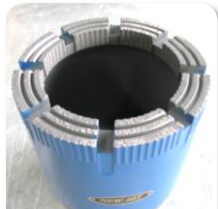
For any type - soft , medium and hard rock



*Can supply custom made Bits in accordance with types of rock formation.*



Standard Type



W type groove



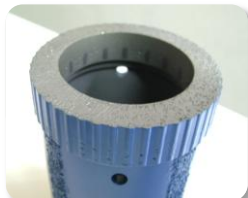
Special configuration



Wireline



Three Step



Doughnut type over size

- 1 Holes on the side to avoid water from a core
- 2 For larger core sizes to reduce cutting areas
- 3 For stable rock formation
- 4 For stable rock formation
- 5 For large volume of water
- 6 For small volume of water  
Avoid a core from the water
- 7 For Single and Casing
- 8 For thick wall Bit

