



NLC COMPANY LIMITED

FOR BETTER DRILLING BUSINESS



LONG TIME ACCUMULATED

TECHNOLOGY FROM JAPAN

TO THE WORLD



We, as a drilling equipment maker, have devoted ourselves to the development of the industry mainly in the areas of deep hole drilling and geological survey since we established our company in 1983. We got independent from **Longyear Company** after a long time experience since 1956, holding great ambition with the inherited technology.

With the rapid spread of industrialization on a global scale, we have witnessed in many areas rising problems threatening human existence. Among them, "Greenhouse Warming" is becoming a major human concern, whose solution requires ultimate culmination of human wisdom with global human efforts. Our mission is to be part of those efforts with our long accumulated expertise and experiences in the coring technologies ecological surveys.

"Where a hole is dug, there is our job."

We manufacture and market high quality products: Drilling Machines, Drill Rods and Tools around the world. We have established firm status with Wireline Coring System mainly in the field of Mining Exploration, Soil Investigation, Water Well



Performance In The



- | | | | | |
|---|--|---|---|---|
| <p>AFRICA</p> <ul style="list-style-type: none"> South Africa Eritrea Ethiopia Mali Niger | <p>OCEANIA</p> <ul style="list-style-type: none"> Australia New Zealand Papua New Guinea | <p>SOUTH EAST ASIA</p> <ul style="list-style-type: none"> Philippines Singapore Vietnam Myanmar Indonesia Malaysia | <p>EAST/CENTRAL ASIA</p> <ul style="list-style-type: none"> China Hong Kong Mongolia Korea Kyrgyz Uzbekistan | <p>CENTRAL/ SOUTH AMERICA</p> <ul style="list-style-type: none"> Nicaragua Chile Brazil |
|---|--|---|---|---|

Our longtime accumulated expertise with advanced technology is developed at our Mito Factory by capable engineers, incorporating customer needs brought from the head office in Tokyo and other branches.



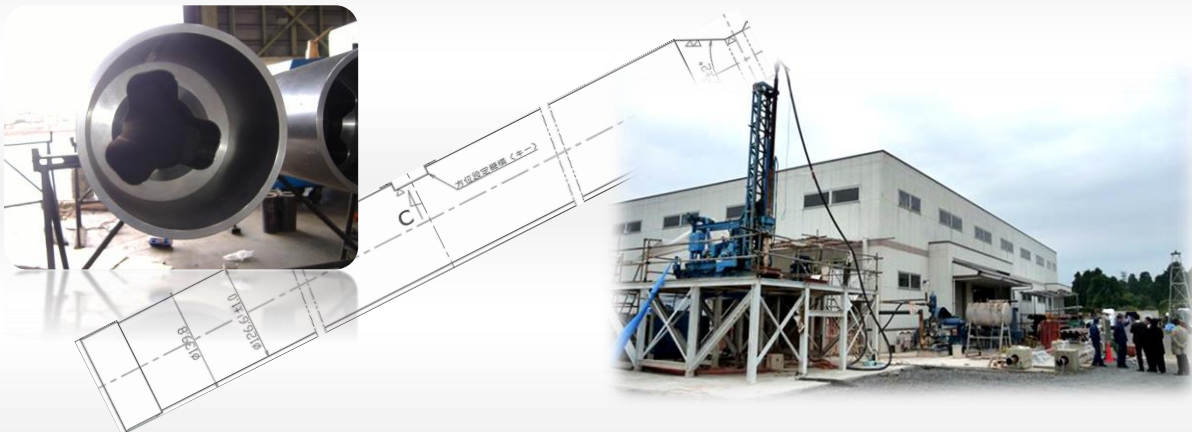
1st Factory



2nd Factory






Highlighted are such academic governmental projects as earth observation well and joint R&D (Research and Development), supplying drilling tools with a technology of control drilling in the optional direction. Such technical research and tests are conducted at our technical laboratory.



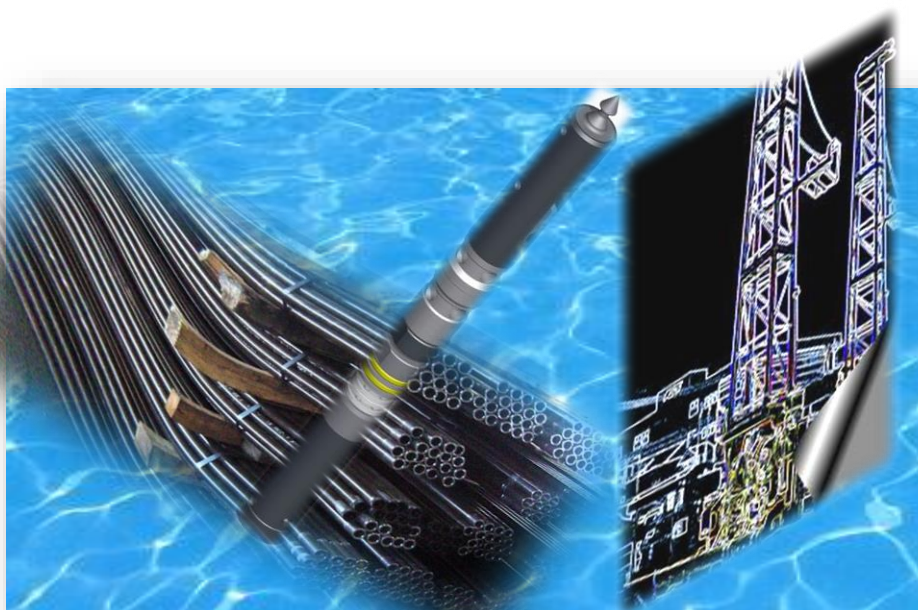
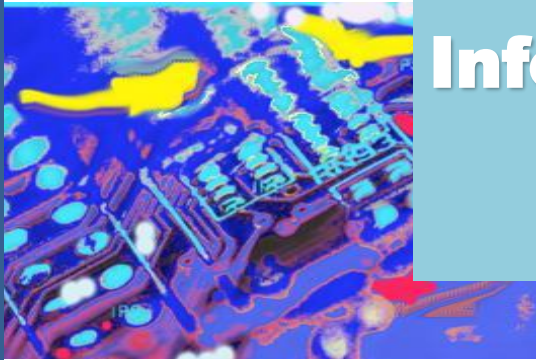
Our contribution is also to be focused on giving high quality support to customers in the process of a selection to an introduction of appropriate items. This is what we seek most to be always helpful to our customers.



Company Profile

Trade Name	NLC Company Limited	
Head Office	Happy Sewing Machine Bldg. 6th Floor 2-9-5, Taito, Taito-ku, Tokyo 110-0016 Japan	
Fukuoka Branch	2-4-1, Nakahata, Onojo, Fukuoka 816-0921 Japan	
Mito Factory	645-1, Kogyodanchi, Hitachiomiya, Ibaraki 319-2134 Japan	
Company History	<p>Nippon Longyear Co., Ltd., which was 100% owned by Longyear Company at Minneapolis, U.S.A., was established in Japan in 1956. Since then Nippon Longyear had been manufacturing and marketing Drilling equipment, Wireline system, civil engineering equipment under Longyear patents and licence.</p> <p>As of June 1, 1983, Nippon Longyear transferred all the rights of manufacturing and marketing on Longyear products to NLC Co., Ltd. that was authorized by Longyear Co. NLC commenced manufacturing and marketing as the successor of Nippon Longyear effective from June 1, 1983. Established in Shibuya-ku, Tokyo with the paid-up Capital of ¥50,000,000.</p> <p>On June 1, 1994, Geo Engineering Co., Ltd. was established, being independent from Contract division of NLC Co., Ltd with accumulated Wireline system technology of the company, targeting the development/introduction of advanced technology.</p> <p>Geo Engineering is 100% owned by NLC with paid-up Capital of ¥20,000,000.</p>	 <p style="text-align: center; font-size: small;">Geo Engineering Co., Ltd.</p>
Main Handling Items	Mining, civil engineering, civil engineering works equipment, tools and accessories, Drilling Machines, Pumps, Core Tubes, Wire-Line Core barrels, Drill Rods, Casings, Packers for Grouting, Metal Bits, Tri-cone Bits, Diamond Bits, Air-Hammers, Mast, Wire-Line Hoist, Conical Bits, TC Inserts, TC Knife, TC Rods, Fiberglass Casings & Tubing.	
Certifications	ISO 19001 <div style="display: flex; justify-content: center; align-items: center; gap: 20px;">   </div>	

Product Information



All Hydraulically Driven Core Drill

NL-500 / 700

All Hydraulically Driven Core Drill

NL-700-V2



NL-500



Features

1) Versatility

Both High speed and low speed rotation are applicable in drilling operations. PJ Head is available.

2) Function-oriented

Central Control system

Hydraulic Sliding Head, Mast Slide and Rod Connection Support
(Optional)

3) High Productivity

Easy set-up in a proper Bit Weight & Speed

4) Mobility (when trailer mounted)

5) Other Option

Trailer Mount, Crawler Mount, Outrigger, Mud Pump & Mixer



		NL-500	NL-700-V2
Drilling Capacity	m	HJ-WL-300m / NJ-WL -550m	PJ-WL-350m / HJ-WL-500m / NJ-WL -700m
Spindle I.D	mm	95 / 120 (PJ : Optional)	95 / 120 (PJ : Optional)
Spindle RPM	rpm	70-210, 150-300, 250-500, 470-1,200	70-210, 150-300, 250-500, 470-1,200
Torque (Max.)	kN	5.4, 3.8, 2.3, 0.95	6.1, 4.3, 2.6, 1.1
Thrust	kN	50	50
Pull	kN	80	80
Feed Stroke	m	1.85	2.1
Hyd. Pump	L/min-Mpa	1st:175-20.0, 2nd:120-17.5, 3rd:58-14.0	1st:175-25.5, 2nd:120-17.5, 3rd:50-14.5
Max. Output	PS	87 (65kw) / 1800 rpm	168.3 (123.6kw) / 2200rpm
Dimensions	mm(LxWxH)	4,500 x 2,450 x 2,050	4,710 x 2,530 x 2,090
Weight	kg	4,800 (Less Power)	6,500 (Less Power)

Drilling Capacity, Spindle RPM and Torque are calculated figures.

Mechanical Spindle Type Drill

NL-55

Prestigious drill designed to deal with greater depth with larger diameter.



Features

1. Versatility

High Speed, High Torque and 145mm Spindle I.D.

realize several types of drilling Operations.

2. High Fuel Efficiency

3. Robustness / Long Life

4. Easy Maintenance

Very helpful for maintenance in remote areas.

5. Long Life



Drilling Capacity	m	PJ-WL- 600 m / HJ-WL-1000m / NJ-WL -1500m	
Spindle I.D	mm	145mm (142mm when Hyd.Chuck used)	
Spindle RPM (Max.)	rpm	Low:31, 62, 114, 193	High:176, 359, 658, 1109
Torque (Max.)	N·m	Low:18484, 9241, 5021, 2962	High:3255, 1593, 870, 516
Thrust	KN	168.5	
Pull	KN	222.4	
Feed Stroke	mm	600	
Oil Pump	L/min-Mpa	57-13.7	
Max. Output	KW/PS	45/60 (at 1600rpm)	
Dimension	mm(LxWxH)	2920 x 2250 x 2090	
Weight	kg	3300	

Drilling Capacity, Spindle RPM and Torque are calculated figures.res.

Center Hole Machine

NL-55 Conversion Kit for Long Feed Top Drive

1. Long Feed Stroke of **6.5m**
2. Kelly rod drive for powerful drilling
3. Switchable **Hyd. Motor** on the head with higher rotation speed for coring
4. **Hyd. Breakout Wrench** and **Holder**



Mechanical Spindle Type Drill

L-38-98

High Speed Diamond Core Drill L-38 is well known model in the world, having high acceptance in mineral exploration throughout the global market.



Features

- 1) 8 Bit Speed**
4-step Gear x High & Low
- 2) High Speed**
High Speed is up to 1,105 rpm.
- 3) Robustness / Long Life**
- 4) Easy Maintenance**
- 5) High Fuel Efficiency**
- 5) Option**
Built-in Mast / Built-in Wireline Hoist



Built-in Mast

Two types of built-in masts are available as options :
Long Tall Mast: 9.9m Single Pole Mast : 6.7m (Height)



Drilling Capacity	m	HJ-WL - 375m / NJ-WL - 565m	
Spindle I.D	mm	98mm (94mm when Hyd.Chuck used)	
Spindle RPM (Max.)	rpm	Low:41, 85, 156, 265	High:172, 357, 653, 1105
Torque (Max.)	N·m	Low:6000, 3560, 1940, 1150	High:1750, 850, 460, 270
Thrust	KN	58.4	
Pull	KN	85.3	
Feed Stroke	mm	600	
Oil Pump	L/min-Mpa	50-8.8	
Max. Output	KW/PS	38/51 (at 1800 rpm)	
Dimension	mm(LxWxH)	2250 x 1160 x 1750	
Weight	kg	1880 Less Power	

Mechanical Spindle Type Drill

L-38-150 "Megalo"

Spindle Type of Drill for Larger Diameter has enjoyed high prestige in Japanese market over long years.



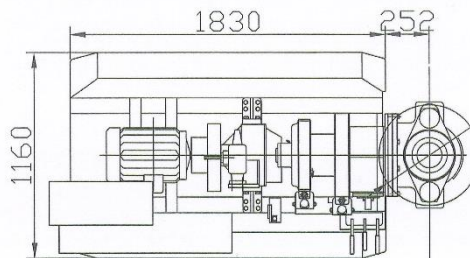
Features

- 1) 8 Bit Speed
- 2) High Torque
High torque is up to 10375Nm.
- 3) Large diameter with 148 mm I.D.
- 4) Versatility
 - Water-well drilling
 - Anchor drilling
 - Coring operation, etc.
- 5) Robustness / Long Life
- 6) Easy maintenance
- 7) High Fuel Efficiency

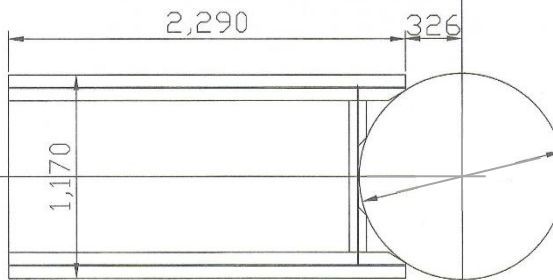
Standard Megalo



L-Frame Megalo



Max. applicable actual diameter : 480mm



Max. applicable actual diameter : 900mm

Adding a standard model, we offer L-Frame Megalo to deal with bigger diameters of tools up to 900mm for water well drilling, civil constructions, etc.

		Standard L-38-150	L-Frame L-38-150
Drilling Capacity	M	HJ-WL 375 / NJ-WL 565	
Spindle I.D	mm	145mm (142mm when Hyd. Chuck used)	
Spindle RPM (50Hz)	rpm	Low : 35 / 71 / 130 / 220	Low : 30 / 61 / 112 / 190
		High : 145 / 298 / 548 / 920	High : 122 / 257 / 474 / 797
Torque (Max.)	N·m	1st : 4600 2nd : 1430	3rd : 640
Thrust	kN	58.0	
Pull	kN	85.3	
Feed Stroke	mm	600	
Oil Pump	L/min - MPa	50 - 8.8	
Max. Output	kW / PS	49 / 66 at (1500 rpm)	
Dimension	mm (LxWxH)	2250 x 1160 x 1190	2820 x 1160 x 1920
Weight	kg	1910 Less Power	

Drilling Capacity, Spindle RPM and Torque are calculated figures.res

Man-portable Compact Drill

NL-26

Man-Portable Drill equipped with Hydraulic Chuck.

This small-sized and light drilling machine can be disassembled to be easily carried to mountainous areas.



Performance in
Philippines

Soil Investigation in 2018
DPWH

Features

1. Light Weight

Main Gear Case, Transmission & Clutch Housing, Swivel Frame, and Cross Head are of aluminum.

2. 6-step Gearing

Speed can be controlled finely in an actual drilling operation.

3. Max. Disassembling Weight : 60 kgs (except power unit).

4. Compact Hydraulic Chuck equipped as a standard.

5. Safety

Rotary portions such as Cone Pulley and Drive Rod are equipped with Safety Guards.

1. Sealing System

No oil leakage from Gear Case nor the other portions.



Drilling Capacity	m	40.5 Rod – 230m / AJ-WL – 200m / BJ-WL- 150m / NJ-WL – 100m
Spindle I.D	mm	47mm
Spindle RPM (Max.)	rpm	Low:90, 135, 180 High:275, 360, 560
Torque (Max.)	N·m	Low:912, 600, 450 High:275, 225, 150
Thrust	KN	30.9
Pull	KN	38.5
Feed Stroke	mm	515
Oil Pump	L/min-Mpa	20-6.8
Max. Output	KW/PS	8.6
Dimension	mm(LxWxH)	1360 x 750 x 1405
Weight	kg	450 Less Power

Man-portable Compact Drill

NL-G80

**Portable Drill with Hydraulic Top Head Drive
Designed for shallow coring, Geo technical and Tri-cone rotary drilling.**



Increased power model (NJ x 137m) is also available.

Features

Two types of G80s are available:
NL-G80 : standard : (50 to 800 rpm)
NL-G80 II : 2 speed transmission in two rotational ranges (High Speed Coring and High Toque Rotary Work)

1. Portability

Incorporates a compact modular design, and man portable. Easy to set up, operate, and service even in remote areas.

2. Versatility

- Rotary operation with optional high torque/low speed motor – Tri-cone Roller Bits to depth of 35 m.
- High Angles from 90 to 37 or 50° degrees.

3. Productivity

- Productive with its 1.7m feed stroke.
- Optional Extension Mast with Double Sheave for wireline drilling

4. Safety

Emergency stop system for Rod rotation when opening Safety Cover.

		NL-G80		NL-G80 II			
Drill Rod		N size					
Drilling Capacity	m	80 (max.)					
Spindle rpm (Max.)	rpm	50 ~ 800	0 - 78 (Option)	1st Gear 250 - 400	2nd Gear 400 - 1000	1st Gear 10-130 (Option)	2nd Gear 10-200 (Option)
Torque (Max.)	N·m	125	1,200	196	125	882	391
Thrust Capacity	N	29,700		29,700			
Pull Capacity	N	43,600		43,600			
Hyd. Pump	L/min-Mpa	45(at 1200 rpm) / (at 1200 rpm)-14.0Mpa					
Max. Output	KW/PS	11/17					
Dimensions	mm(LxWxH)	2100x1100x2700 (vertical)					
Weight	kg	929					

Machines for Civil Construction

LHB-150 Low Head

Drilling / Injection Combined Machine for Jet Grouting with Step-up device

Low Head eliminates going up to the top of machine in rod lifting..

Spindle I.D	mm	145mm (142mm when Hyd. Chuck used)		
Spindle RPM (50Hz)	rpm	Low : 1 - 6.5 / 2.2 - 13 / 4 - 24 / 6.5 - 41	High : 11.5 - 71 / 24 - 144 / 43 - 262	
Torque (Max.)	N·m	1st : 4600	2nd : 1430	3rd : 640
Thrust	kN	17.6		
Pull	kN	27.4		
Step-up Interval	mm	25-50-75		



LSD

Compact Hydraulic Drill for drilling on slopes or tunnel, etc. with DTH.

Control Panel and Oil Power Unit are separated.

	m	LSD 7.5	LSD 3.7
Drilling Capacity		20-80m (at 66-115 mm dia. hole)	10 (at 66 mm dia. hole)
Spindle I.D	mm	62	42
Spindle RPM (Max.)	rpm	0-60	0-65
Drilling Angle	Degree	7(upward)-60(downward)	Any angle as installed
Torque (Max.)	N·m	980.6	441.3
Thrust	N·m	29414.9 (at 980 MPa)	400 (at 686 MPa)
Pull	N·m	24516.6	3922.6
Feed Stroke	mm	600	300
Retract Stroke	mm	450	300
Weight	kg	470	100



NSP

**“Rock Mighty Drill”
Hydraulically Driven Compact Rotary Percussion Drill**

Light weight for easy scaffolding / Double Tube Percussion Drilling

	m	NSP-30	NSP-30V	NSP-37V
Drilling Capacity		20-30m		30-50
Percussion	bpm	550-880		
Spindle RPM (Max.)	rpm	35, 65		
Striking Force	kg·m	0-55		
Casing Size	mm	96, 118, 133		
Drilling Angle	Degree	5 (upward)-45 (downward)	30 (upward)-90 (downward)	
Torque (Max.)	N·m	2941.9, 1470.9		3922.6, 1961.3
Thrust	N·m	19613.3 (at 13.7 MPa)		21574.6 (at 16.6 MPa)
Pull	N·m	26477.9 (at 13.7 MPa)		31871.6 (at 16.6 MPa)
Feed Stroke	mm	1700		

